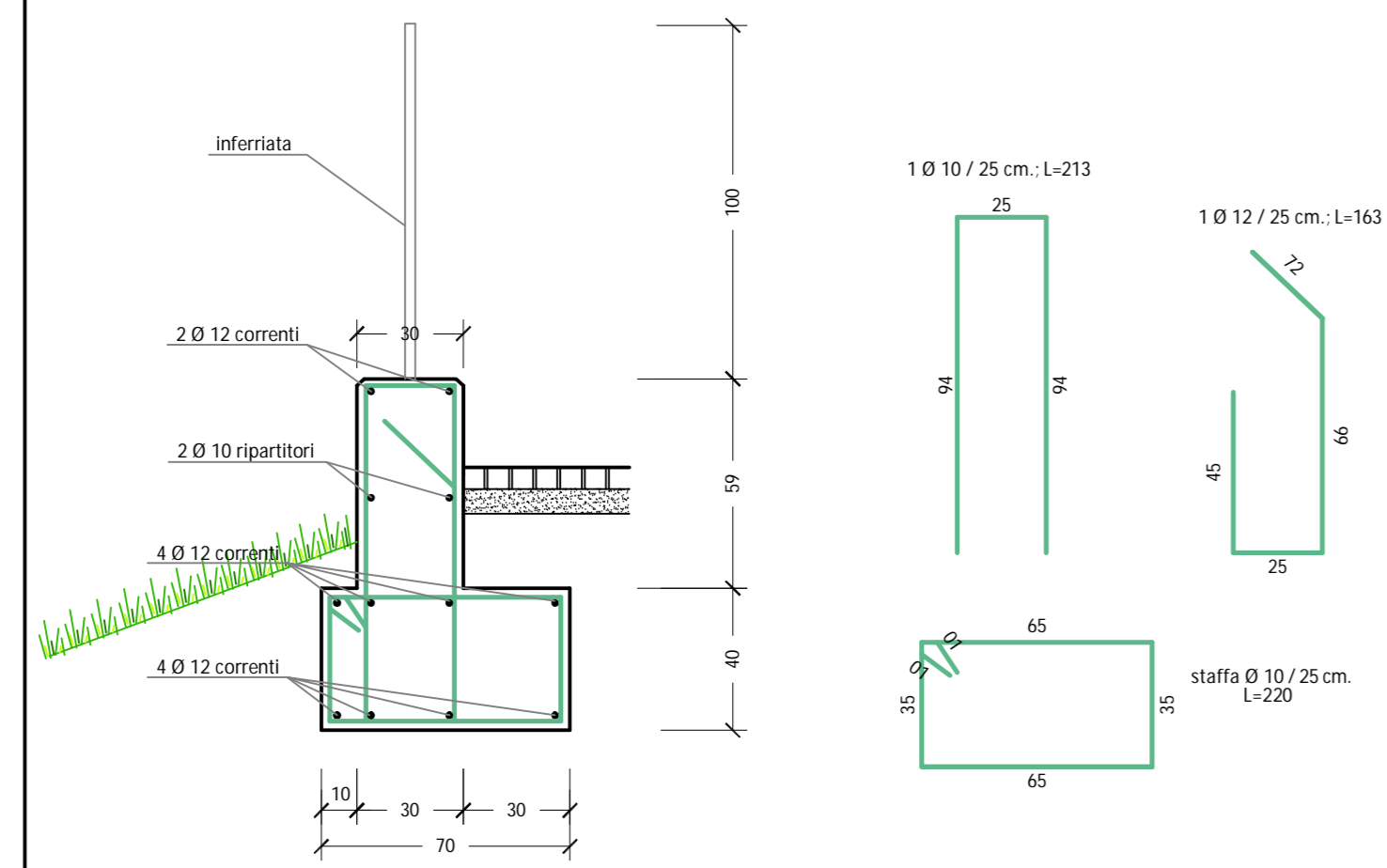
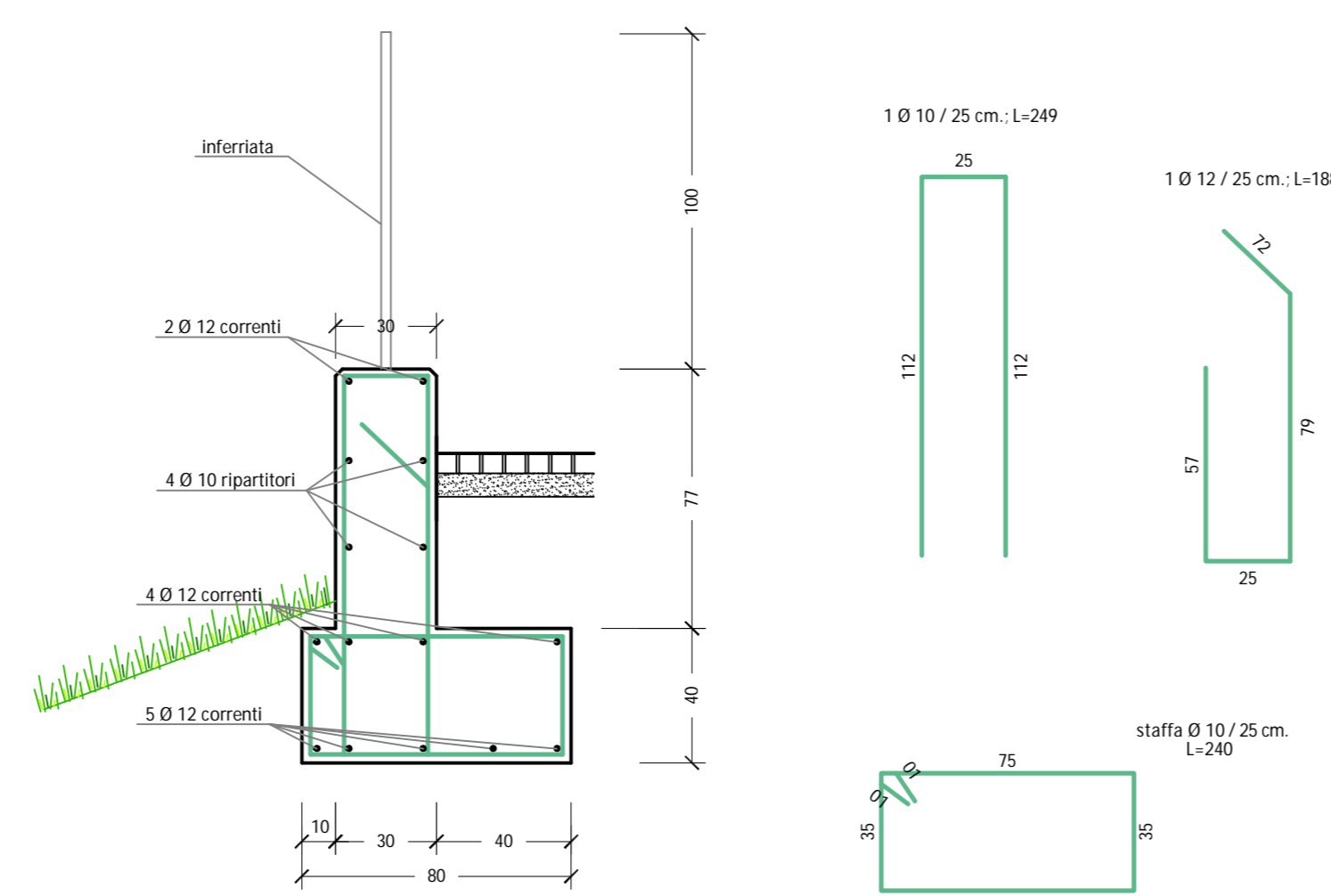


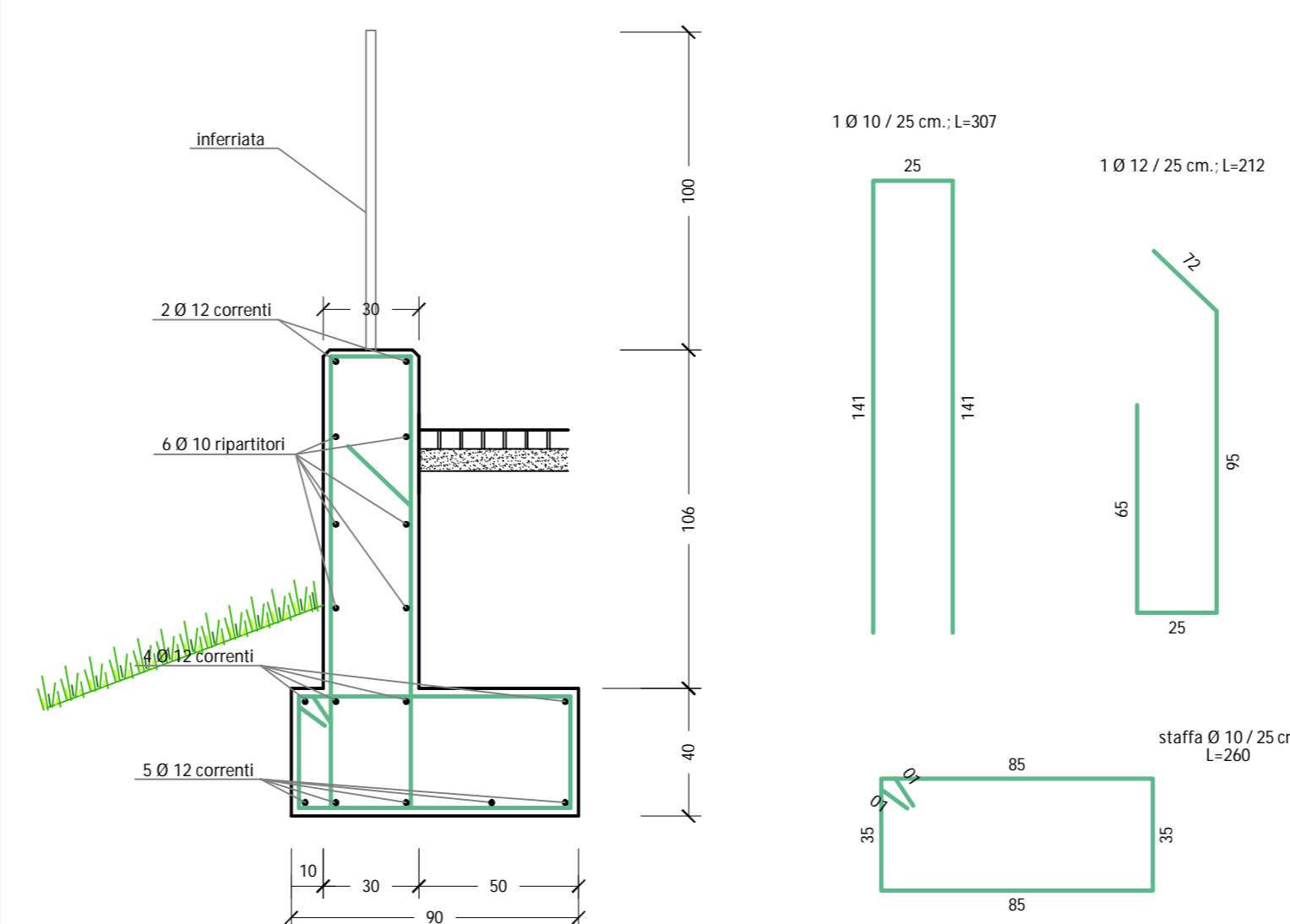
PARTICOLARE MURO TRATTO A-B scala 1:20



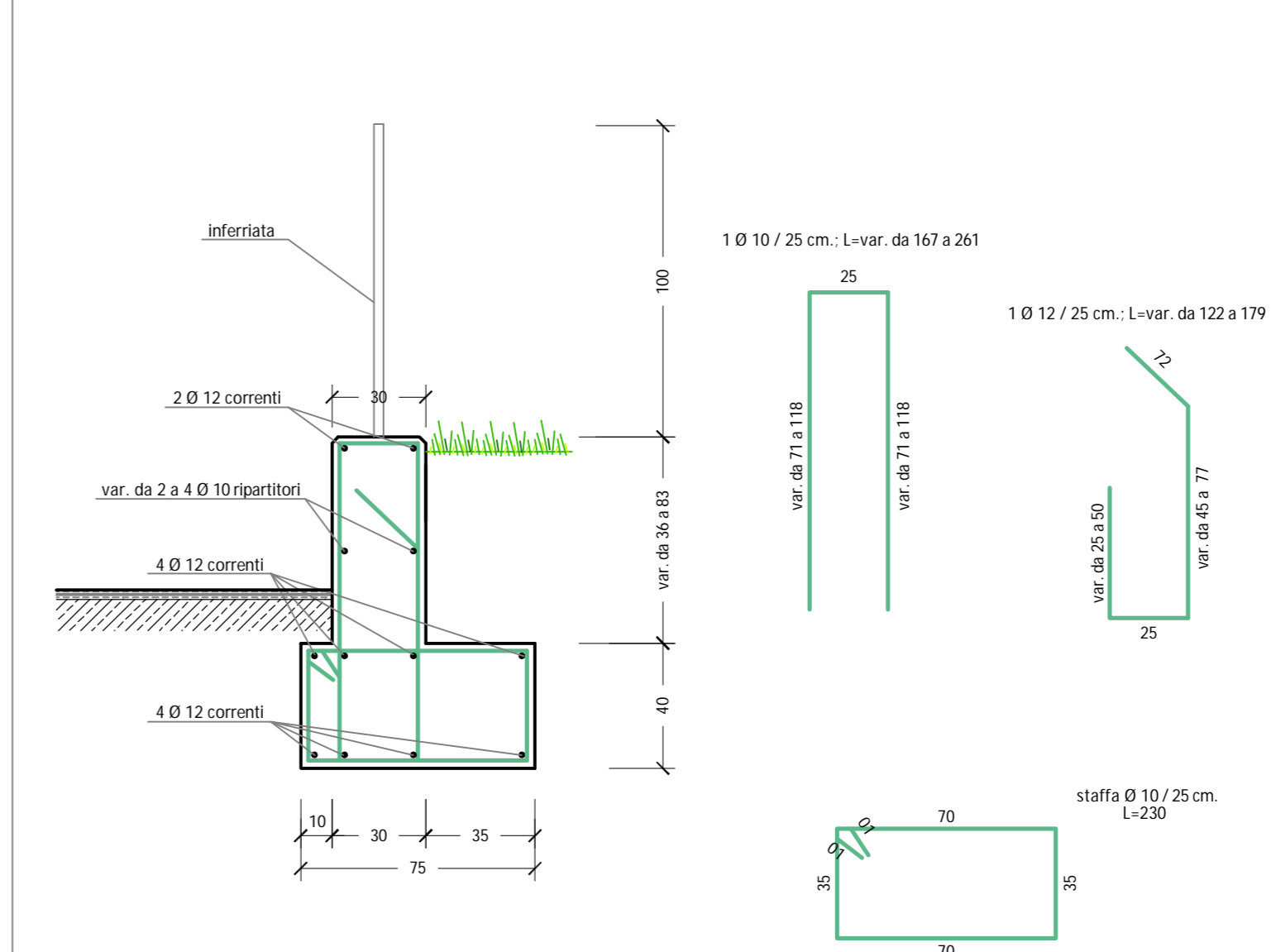
PARTICOLARE MURO TRATTO B-C-D scala 1:20



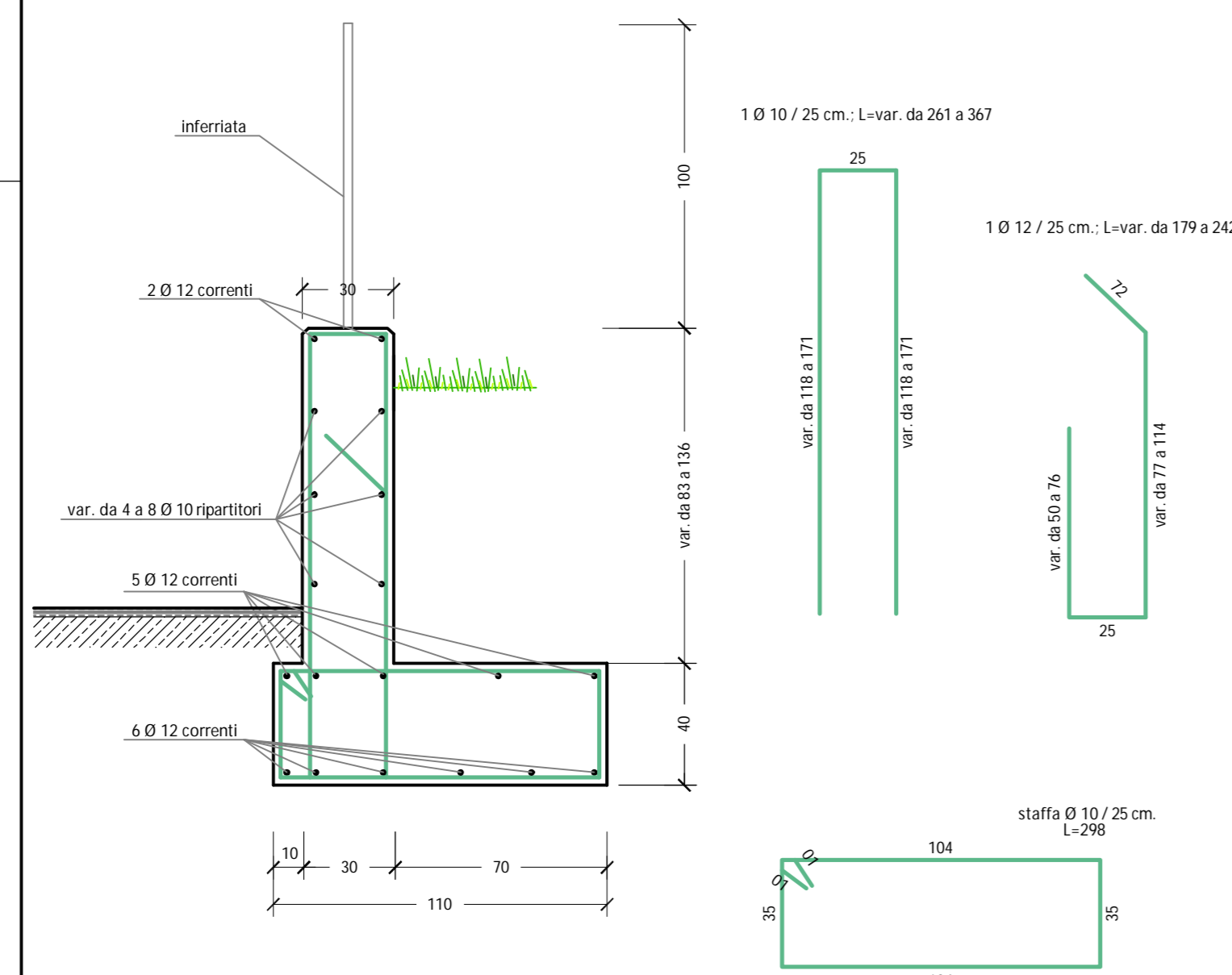
PARTICOLARE MURO TRATTO D-E scala 1:20



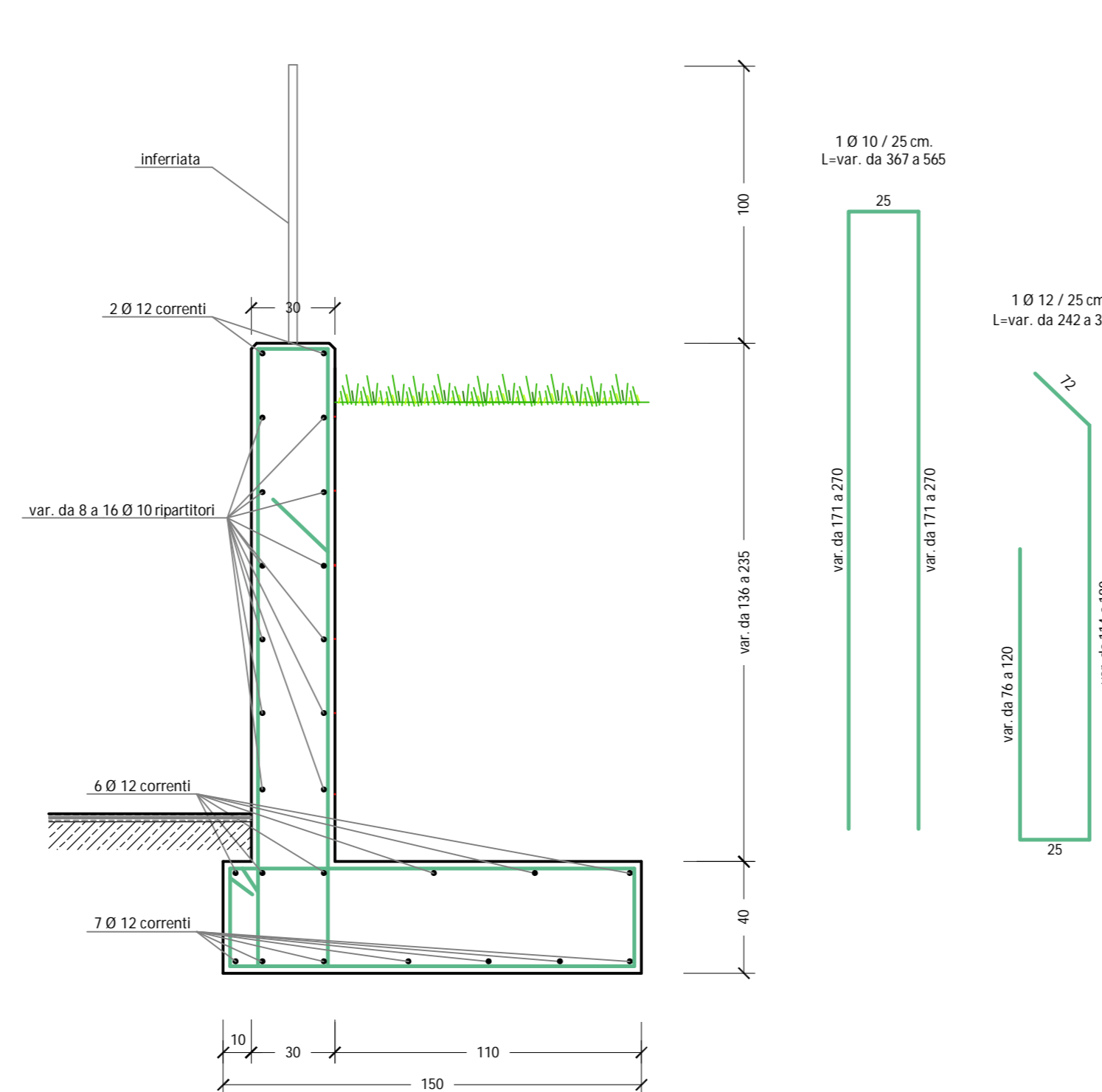
PARTICOLARE MURO TRATTO J-K scala 1:20



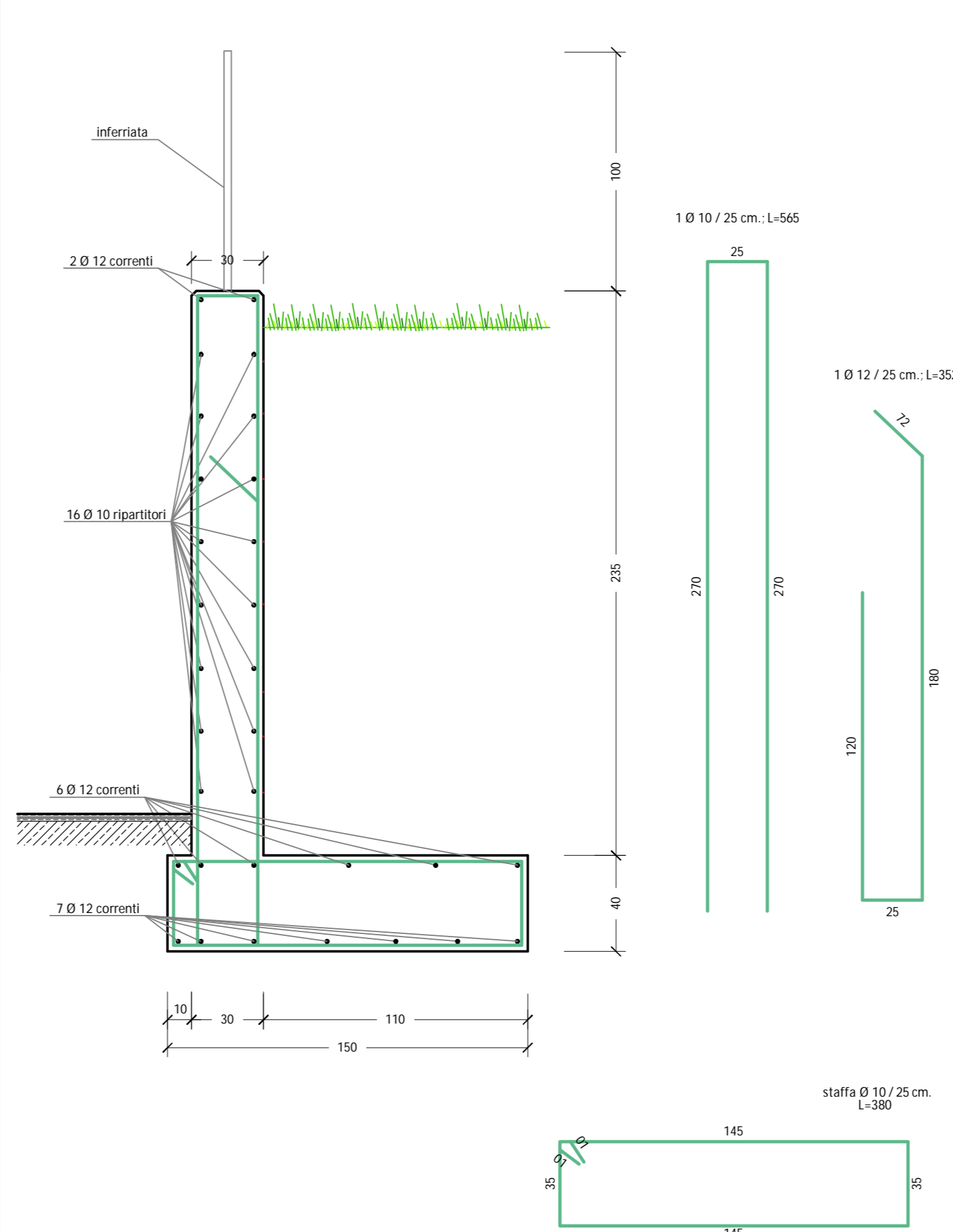
PARTICOLARE MURO TRATTO K-L scala 1:20



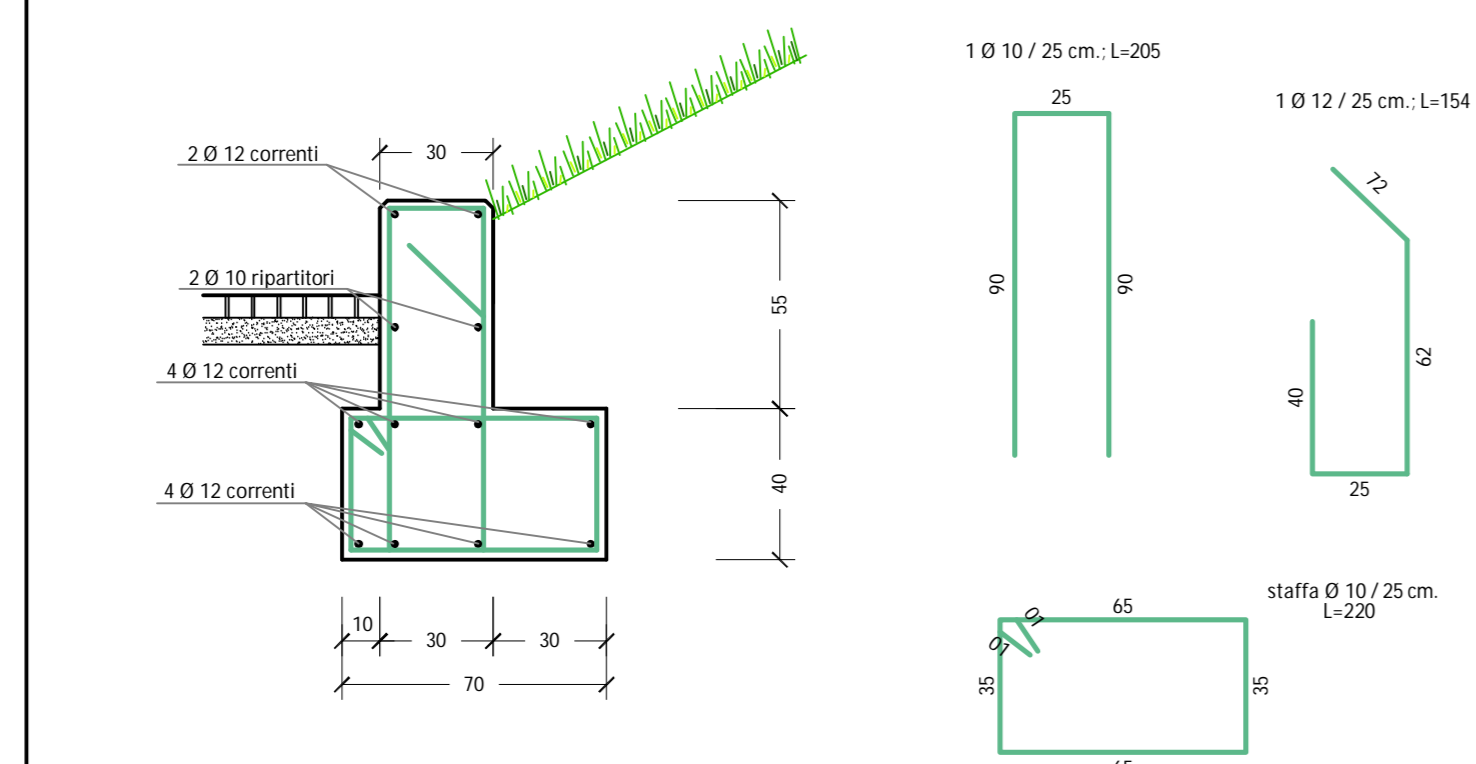
PARTICOLARE MURO TRATTO L-M scala 1:20



PARTICOLARE MURO TRATTO M-N-O scala 1:20



PARTICOLARE MURO TRATTO N-P-Q e R-S-T-U scala 1:20



COMUNE DI LUISAGO
UFFICIO TECNICO

Lavori di:
**Realizzazione parcheggio pubblico e
area mercato in Via Petrarca**

Progetto definitivo-esecutivo

Elaborato:
- Particolari muri scala 1:20

dicembre 2015

Il Progettista
Il Tecnico Comunale

Geom. Christian Baruffini

TAV. **8**